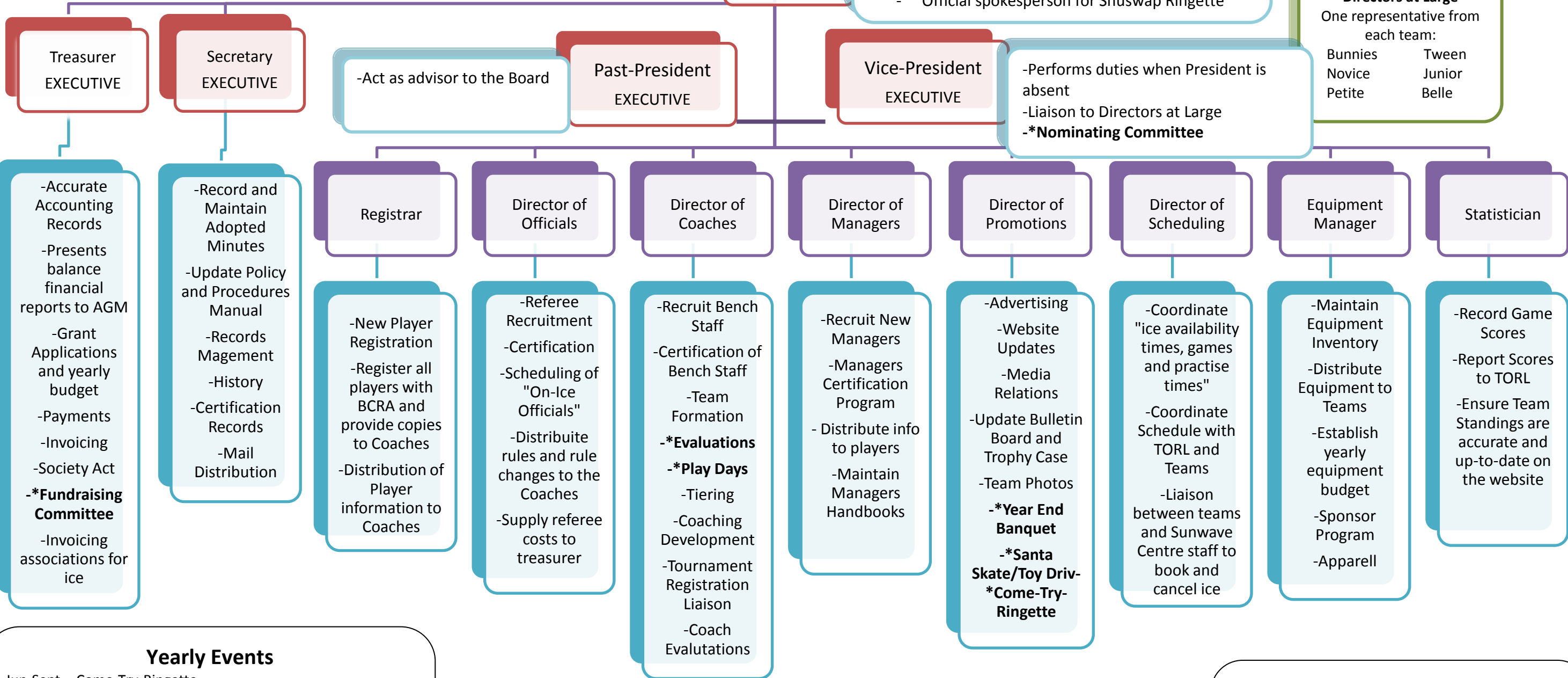


Shuswap Ringette Association BOARD OF DIRECTORS

- TORL Executive Member-Represents Shuswap at monthly meetings and reports back to Board of Directors.
- Official liaison between BCRA and TORL
- Preside at all meetings
- Prepares meeting agenda
- Official spokesperson for Shuswap Ringette

- Directors at Large**
One representative from each team:
- | | |
|---------|--------|
| Bunnies | Tween |
| Novice | Junior |
| Petite | Belle |



- Yearly Events**
- | | |
|----------|---|
| Jun-Sept | -Come-Try-Ringette |
| Jun-Dec | - Player Registrations |
| Sept | -Recruit Bench Staff |
| Sept-Oct | -Team Formation/Evaluations |
| Oct | -Play Days/Team Photos/Tournament Registrations |
| Nov | -Retreat/Tiering/Provincial Registration |
| Dec | -Santa Skate/Toy Drive |
| Feb | -Pub Night/Succession Planning/Nominations |
| Mar | -AGM/Year End Banquet |
| May | -Scholarship Selection |
| May-Sep | -Schedule Ice |

Board Meetings

Shuswap Ringette Association holds regular Board of Directors meetings to hear, and deal with business of the Association. All meetings are held at **6:30PM on the second Monday of every month**, unless otherwise indicated, and generally run around two hours in length. Special meetings may be called by the President. Meetings are generally held in the lower meeting room at Sunwave Centre. **Parents of or Registered Members with the Shuswap Ringette Association are welcome to attend any open meeting**, but notification must be given to the President in advance of any meeting if you would like to make a presentation to the Board.

- *Sub Committees**
- Evaluations**-Chair-Director of Coaches
 - Come-Try-Ringette**-Chair-Director of Managers
 - Year End Banquet**-Chair-Director of Promotions
 - Fundraising Committee**-Chair-Director of Finance
 - Pub Night Committee**- Chair-Director of Finance
 - Play Days**-Director of Coaches
 - Santa Skate/Toy Drive**-Chair-Director of Promotions
 - Nominating Committee**-Chair-Vice President
 - Scholarship Committee**-Director of Managers